

PRESSURE CONTROL VALVES

H SERIES PRESSURE CONTROL VALVES

H Series valve are direct type pressure control , operate by internal or external pilot . Differ internal or external pilot & drain can be difference function for sequence , unloading , counter balance or low pressure relief valves.

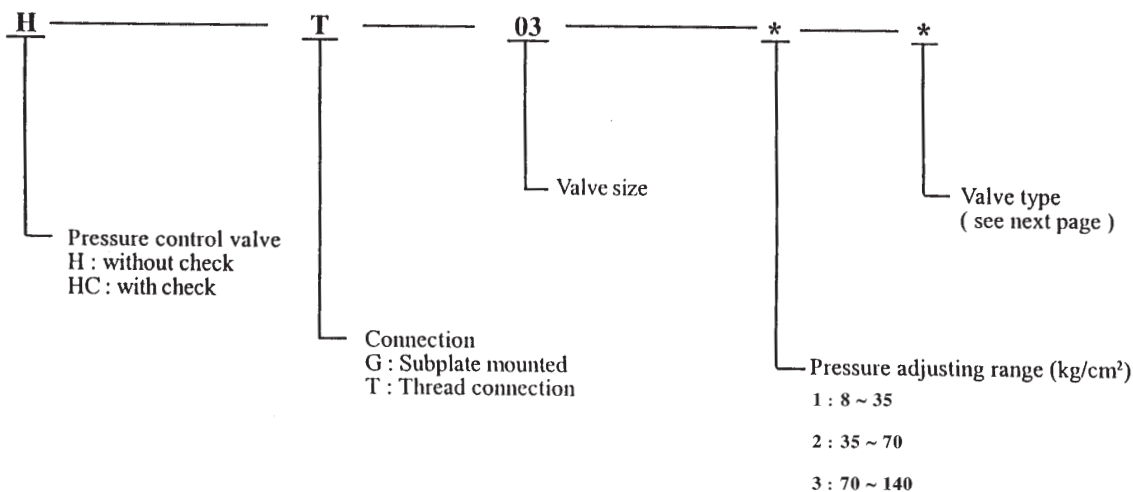
	Subplate type	Thread type	Max. flow rate l/min	Max. working pressure kg/cm ²	Weight		Pressure adjust range kg/cm ²
					kg		
H type pressure control valve	HG-03-**	HT-03-**	50	210	4.0	3.7	1 : 8 ~ 35
	HG-06-**	HT-06-**	125		6.1	6.2	
	HG-10-**	HT-10-**	250		11.0	12.0	
HC type pressure control valve with check	HCG-03-**	HCT-03-**	50		4.8	4.1	2 : 35 ~ 70
	HCG-06-**	HCT-06-**	125		7.4	7.1	
	HCG-10-**	HCT-10-**	250		13.8	13.8	

SEQUENCE VALVE – Limit flow after pilot pressure reach the setting pressure. A set pressure must be reached and maintained in primary circuit leg before flow is mode available to a secondary leg.

UNLOADING VALVE – It be used to divert pump flow to tank. Unloading valve is normally closed, pilot pressure from external source, is required must exceed the setting pressure to shift the valve spool to open.

COUNTERBALANCE VALVE – Provide resistance in circuit leg to balance inertia or static weight , Cylinder which lower heavy loads and motor driving large masses usually require counterbalance valves.

ORDERING CODE

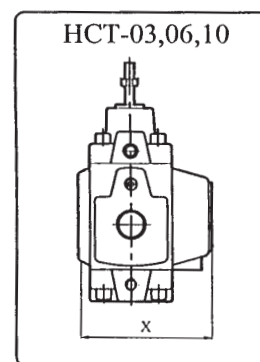
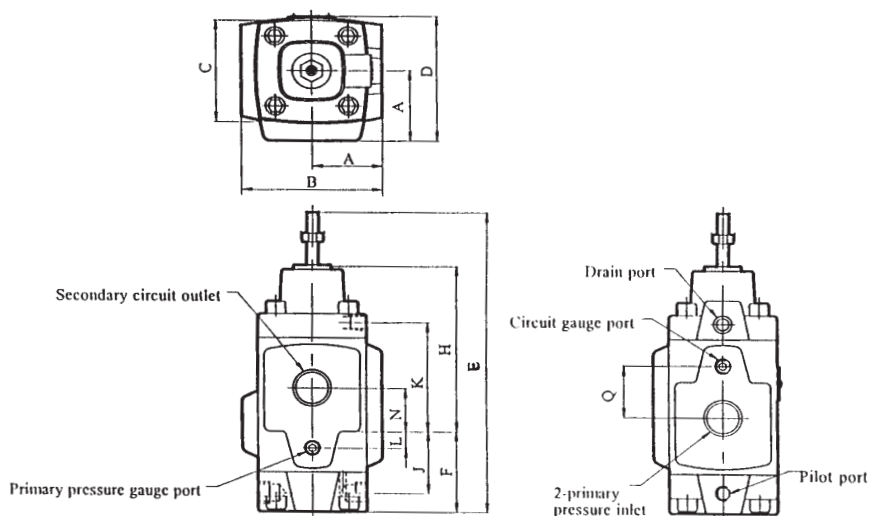


PRESSURE CONTROL VALVES

SEQUENCE VALVE / COUNTERBALANCE VALVE / UNLOADING VALVE

Type 1 - Internal pilot Internal drain	Type 2 - Internal pilot External drain	Type 3 - External pilot External drain	Type 4 - External pilot Internal drain
Relief valve	Sequence valve	Sequence valve	Unloading valve
Counterbalance valve	Sequence and Check valve	Sequence and Check valve	Counterbalance valve

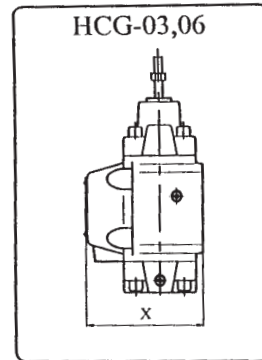
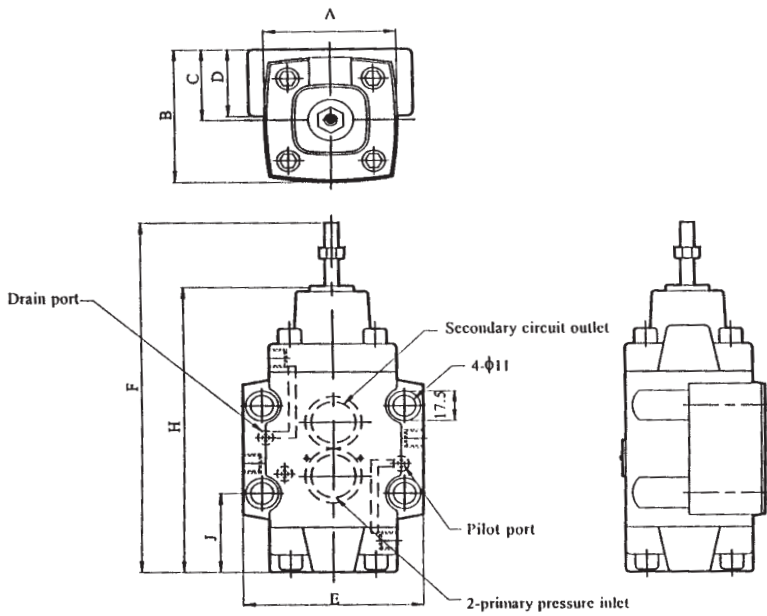
HT - 03,06,10



Model	A mm	B mm	C mm	D mm	E mm	F mm	H mm	J mm	K mm	L mm	N mm	Q mm	S PT	X mm
HT-03	41	82	60	74	191	57.0	106.0	43.0	70.0	0	28	28	1/8"	96
HT-06	48	96	73	87	221	64.5	123.5	50.5	80.5	9	33	42	3/4"	116
HT-10	66	122	86	112	272	84.0	149.0	66.0	98.0	12	40	52	1 1/4"	152

PRESSURE CONTROL VALVES

HG - 03,06



Model	A mm	B mm	C mm	D mm	E mm	F mm	H mm	J mm	X mm
HG-03	60	67	35	39	89	191	163	49.6	90
HG-06	73	79	40		102	221	188	51.0	108

HG - 10

