

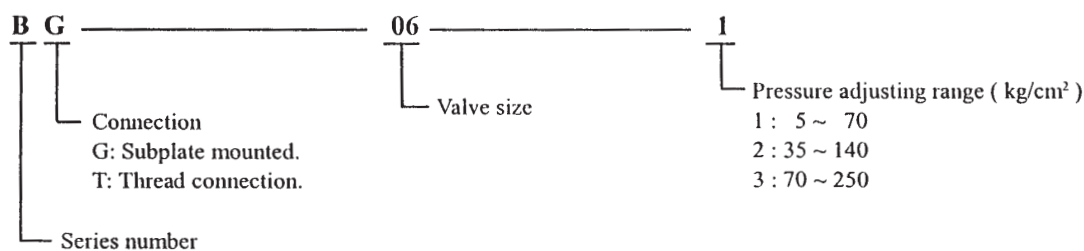
PRESSURE CONTROL VALVES

RELIEF VALVES

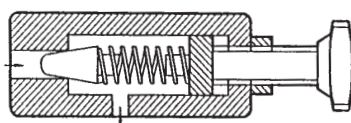
Relief valves limit system pressure by opening to tank when system pressure reaches the valve setting. Relief valves will keep stable pressure in system and avoid pump overload.

	Subplate type	Thread type	Port PT	Pressure adjusting range kg/cm ²	Max. flow l/min	Weight kg	
Remote control relief valve	DG-01	DT-01	1/8"	10 ~ 250	2	1.4	1.6
Direct operated relief valve	DG-02	DT-02	1/4"	1 : 5 ~ 70 2 : 35 ~ 140 3 : 70 ~ 250	12	1.5	
Pilot operated relief valve	BG-03	BT-04	1/2"		100	4.7	5.0
	BG-06	BT-06	3/4"		180	5.6	5.0
	BG-10	BT-10	1 1/4"		400	8.7	8.5
Pilot operated low noise type relief valve	SBG-03	—	3/8"		100	4.1	
	SBG-06		3/4"		200	5.0	
	SBG-10		1 1/4"		400	10.5	
Solenoid operated relief valve	BSG-03	—	3/8"		100	6.5	
	BSG-06	BST-06	3/4"		180	7.4	6.8
	BSG-10	BST-10	1 1/4"		400	10.7	10.5
	SBSG-03	—	3/8"	100	5.8		
	SBSG-06		3/4"	200	6.7		
	SBSG-10		1 1/4"	400	12.2		

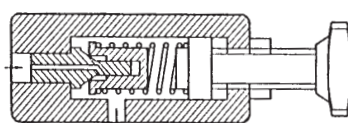
ORDERING CODE



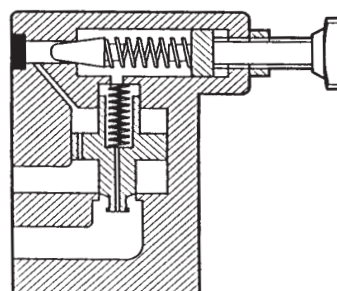
Remote control relief valve



Direct operated relief valve



Pilot operated relief valve



PRESSURE CONTROL VALVES

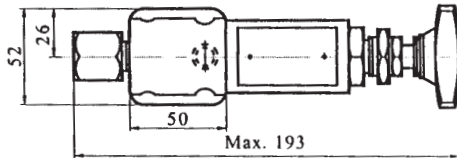
REMOTE CONTROL RELIEF VALVES

Remote control relief valve is connected to the vent port of the main relief valve for remote adjustment.

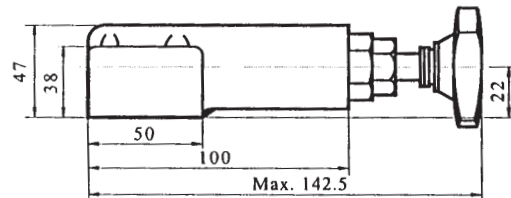
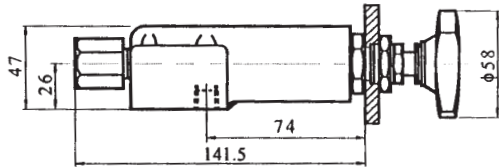
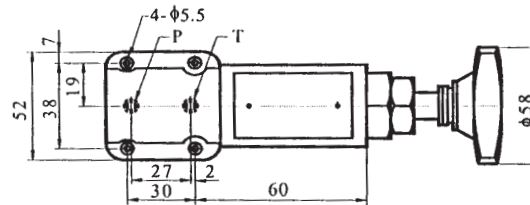
Max. working pressure : 250 kg/cm²

Max. flow : 2 l/min

DT-01



DG-01



DIRECT TYPE RELIEF VALVES

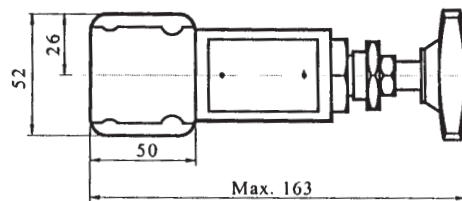
This relief valve use in small flow system or lower pressure required system.

Max. operating pressure : 210 kg/cm².

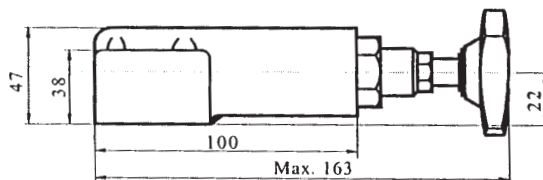
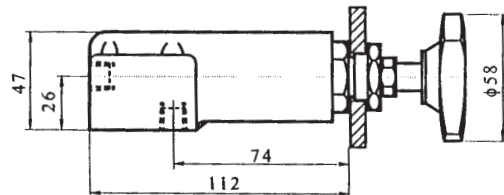
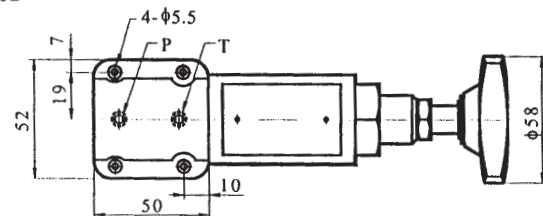
Min. pressure setting : 5 kg/cm² (flow below 9 l/min).

Max. flow : 16 l/min.

DT-02



DG-02



DG-01, 02 SUBPLATE DIMENSIONS

- Mounting bolt kits are supply with valve socket head screws M5 × 45L 4 pieces.
- O-ring P9 (8.8 I.D. × 12.6 O.D.) 2 pieces

