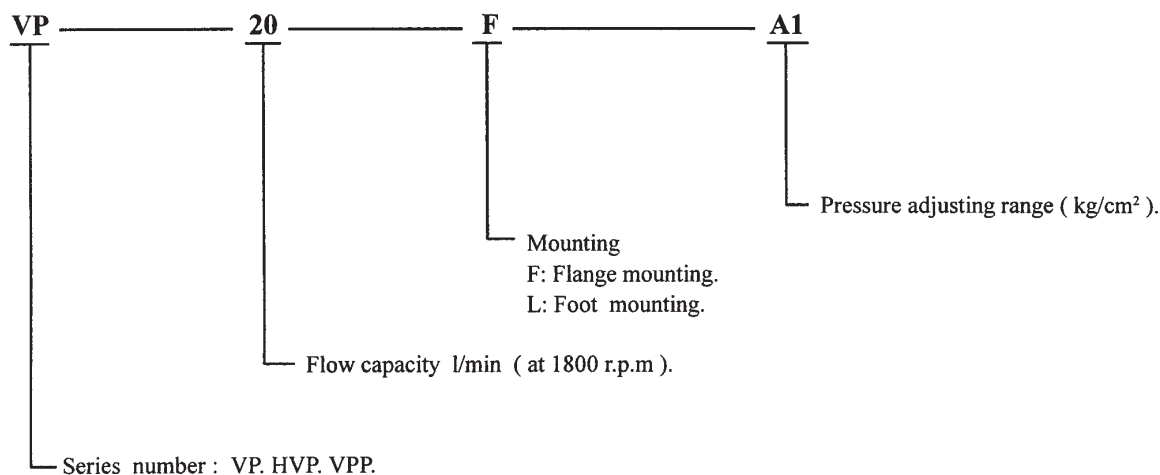


VARIABLE DISPLACEMENT VANE PUMPS

VP Series pump possesses vane construction with pressure compensated units. The design is to provide only the flow required by the system. Pump output flow is controlled by cam ring. Cam ring is controlled by the compensating mechanism of the pump. They are designed for low noise, high efficiency and longer life-span.

Model	Max. pressure kg/cm ²	Pressure adjusting range kg/cm ²	Drive speed (rpm)		Flow at 1800 r.p.m l/m in
			Max	Min	
VP-12	70	A1: 8 ~ 35 A2: 30 ~ 70	1800	800	12
VP-15					15
VP-20					20
VP-30					30
VP-40					40
VPP-20/20					20+20
VPP-30/30					30+30
VPP-40/40					40+40
HVP-30	140	A3: 30 ~ 140			30
HVP-40					40

ORDERING CODE



VARIABLE DISPLACEMENT VANE PUMPS

VP SERIES

Maximum pressure : 70 kg/cm²

Flow capacity : VP-12 : 12 l/min. (at 1800 r.p.m. / 3.5 kg/cm²)

15 : 15

20 : 20

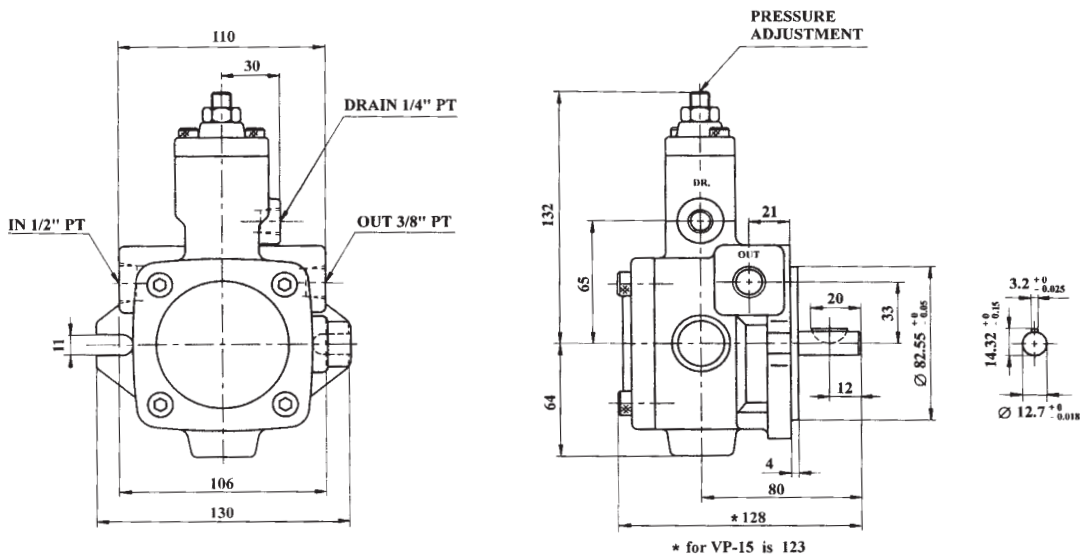
30 : 30

40 : 40

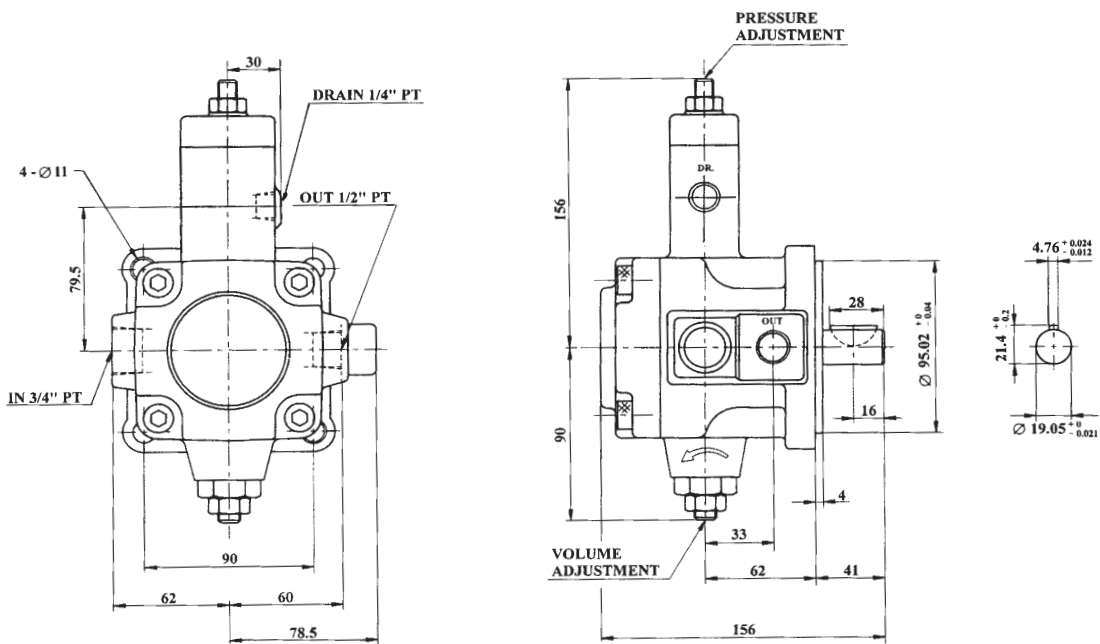
Weight : Foot type VP-12/15/20 : 6.0 kgs.
30/40 : 12.5 kgs.

Flange type VP-12/15/20 : 5.0 kgs.
30/40 : 9.5 kgs.

VP-12/15/20

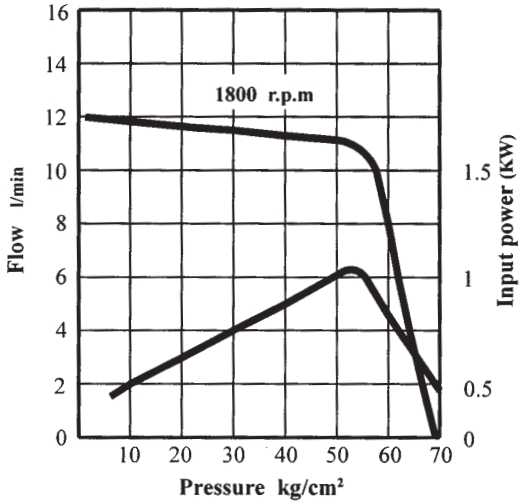


VP-30/40

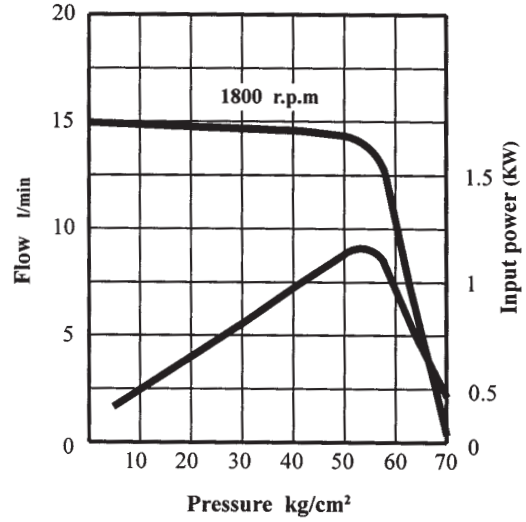


VARIABLE DISPLACEMENT VANE PUMPS

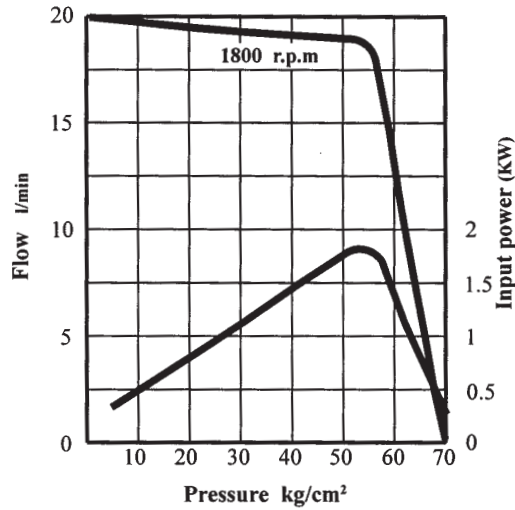
VP-12-A2



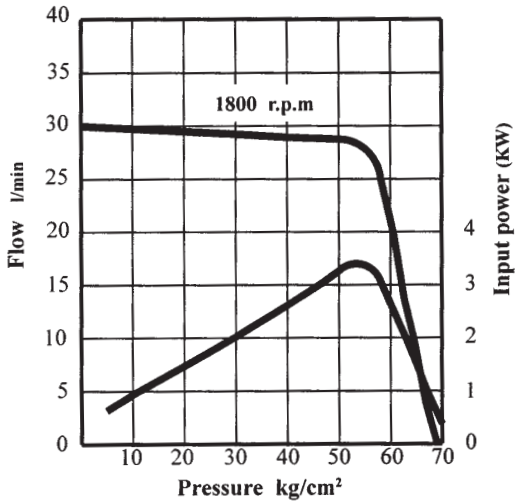
VP-15-A2



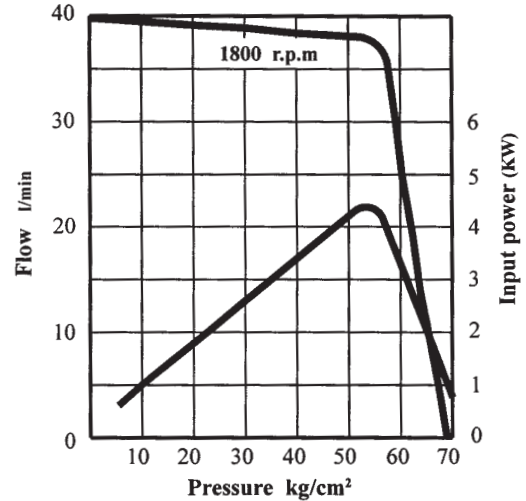
VP-20-A2



VP-30-A2



VP-40-A2



DOUBLE VARIABLE DISPLACEMENT VANE PUMPS

VPP SERIES

Maximum pressure : 70 kg/cm²

Rated capacity : VPP-20/20 : 20+20 l/min. (at 1800 r.p.m. / 3.5 kg/cm²)

30/30 : 30+30

40/40 : 40+40

Weight : Foot type VPP-20/20 : 10.5 kgs.

30/30 : 19.0 kgs.

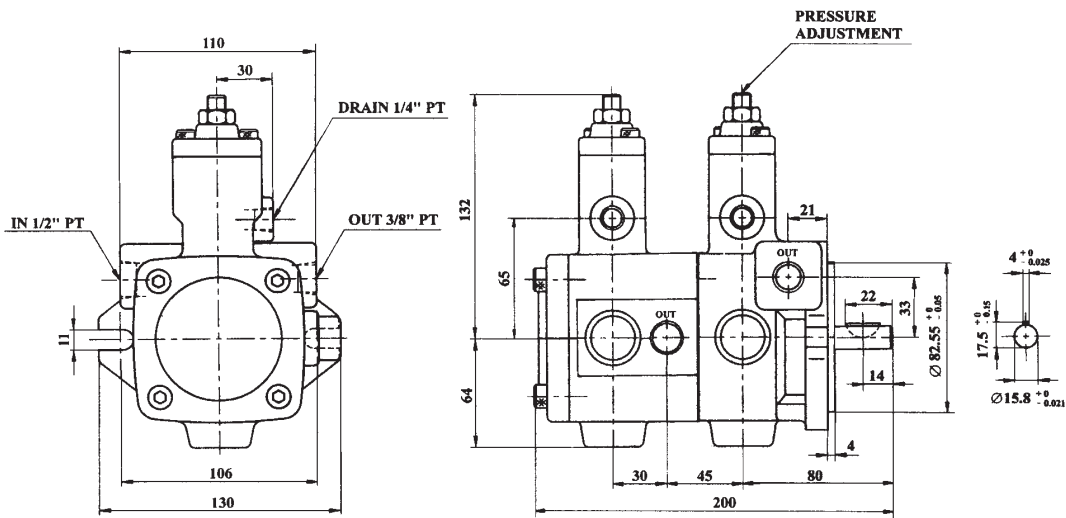
40/40 : 19.0 kgs.

Flange type VPP-20/20 : 9.5 kgs.

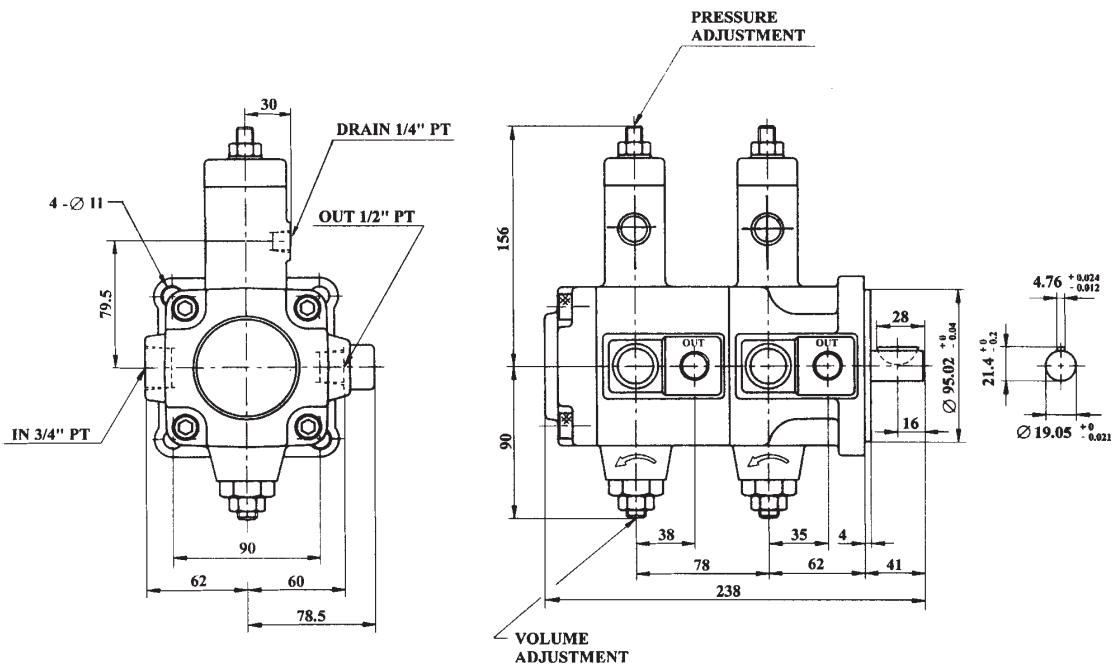
30/30 : 16.0 kgs.

40/40 : 16.0 kgs.

VPP-20/20



VPP-30/30, 40/40



VARIABLE DISPLACEMENT VANE PUMPS

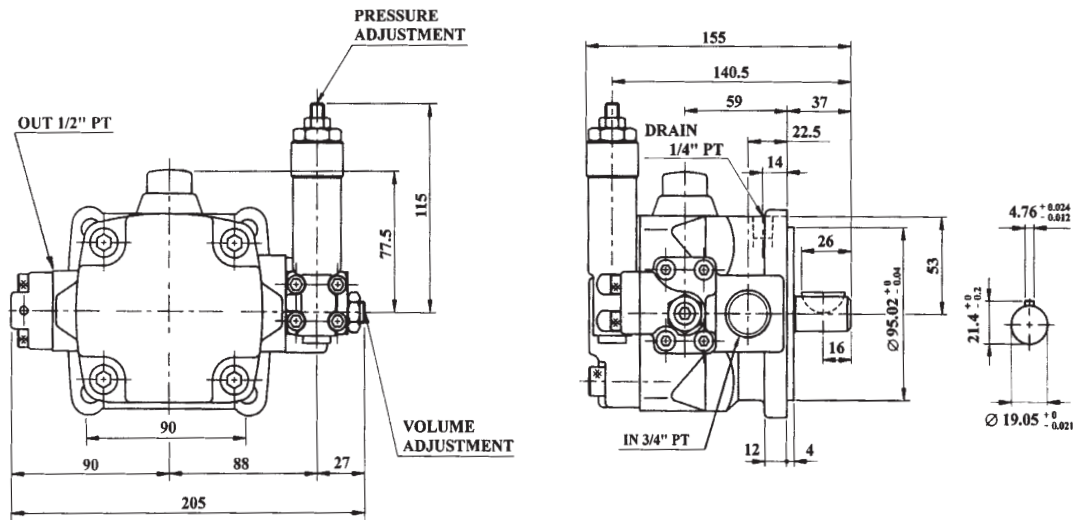
HVP SERIES

Maximum pressure : 140 kg/cm²

Flow capacity : HVP-30 : 30 l/min. (at 1800 r.p.m. / 3.5 kg/cm²)
40 : 40

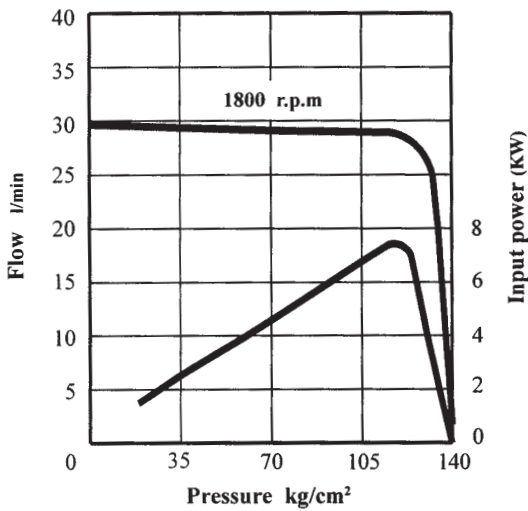
Weight : Foot type : 12.5 kgs. Flange type : 9.5 kgs.

HVP-30/40



PERFORMANCE CURVES

HVP-30-A3



HVP-40-A3

